

MAPS OF SURFICIAL GEOLOGIC HABITATS FOR COASTAL OREGON

Figure B.1. Surficial geologic habitat map near Seaside, Oregon (OSU [Oregon State University] 2011).

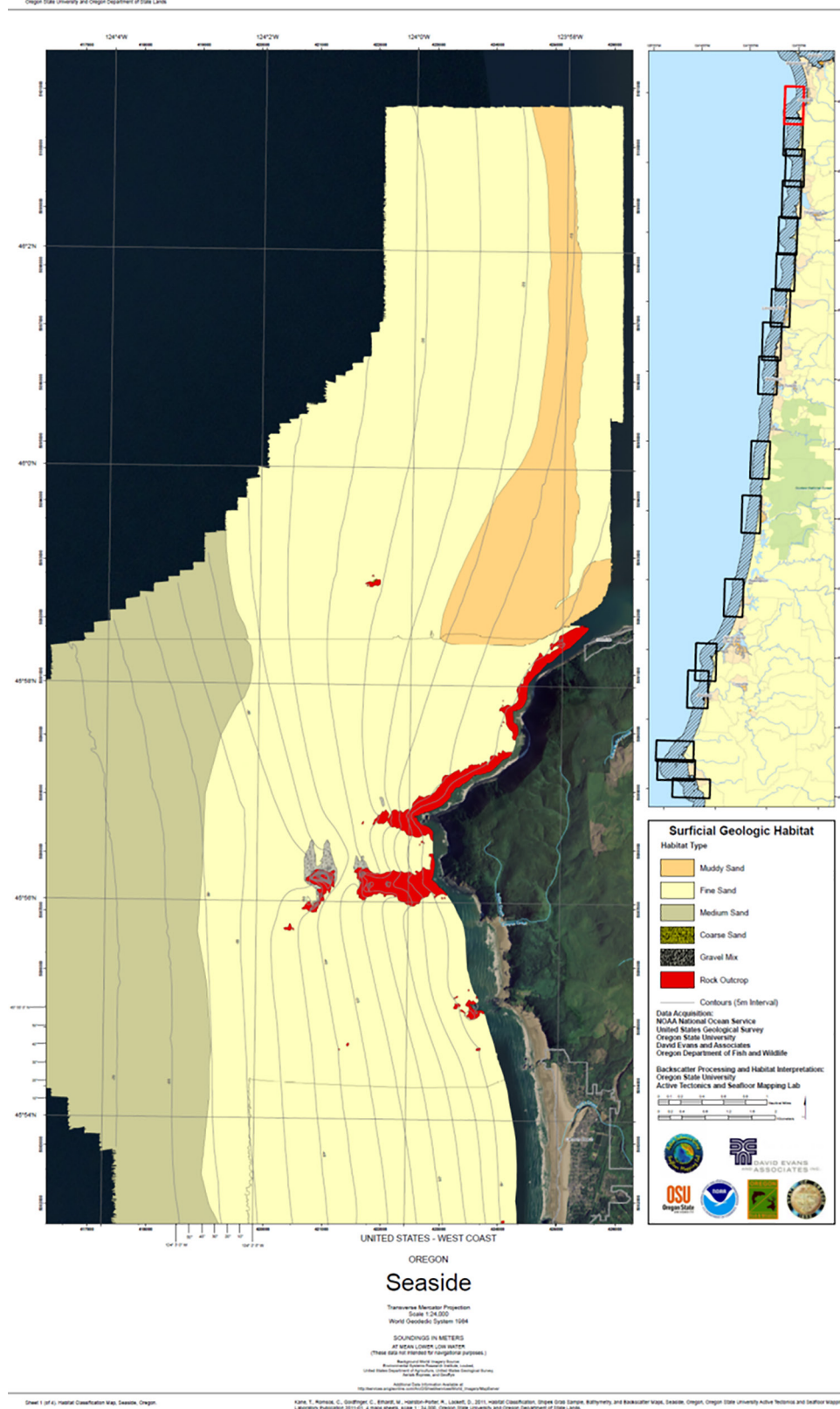


Figure B.2. Surficial geologic habitat near Hug Point, Oregon (OSU 2011).

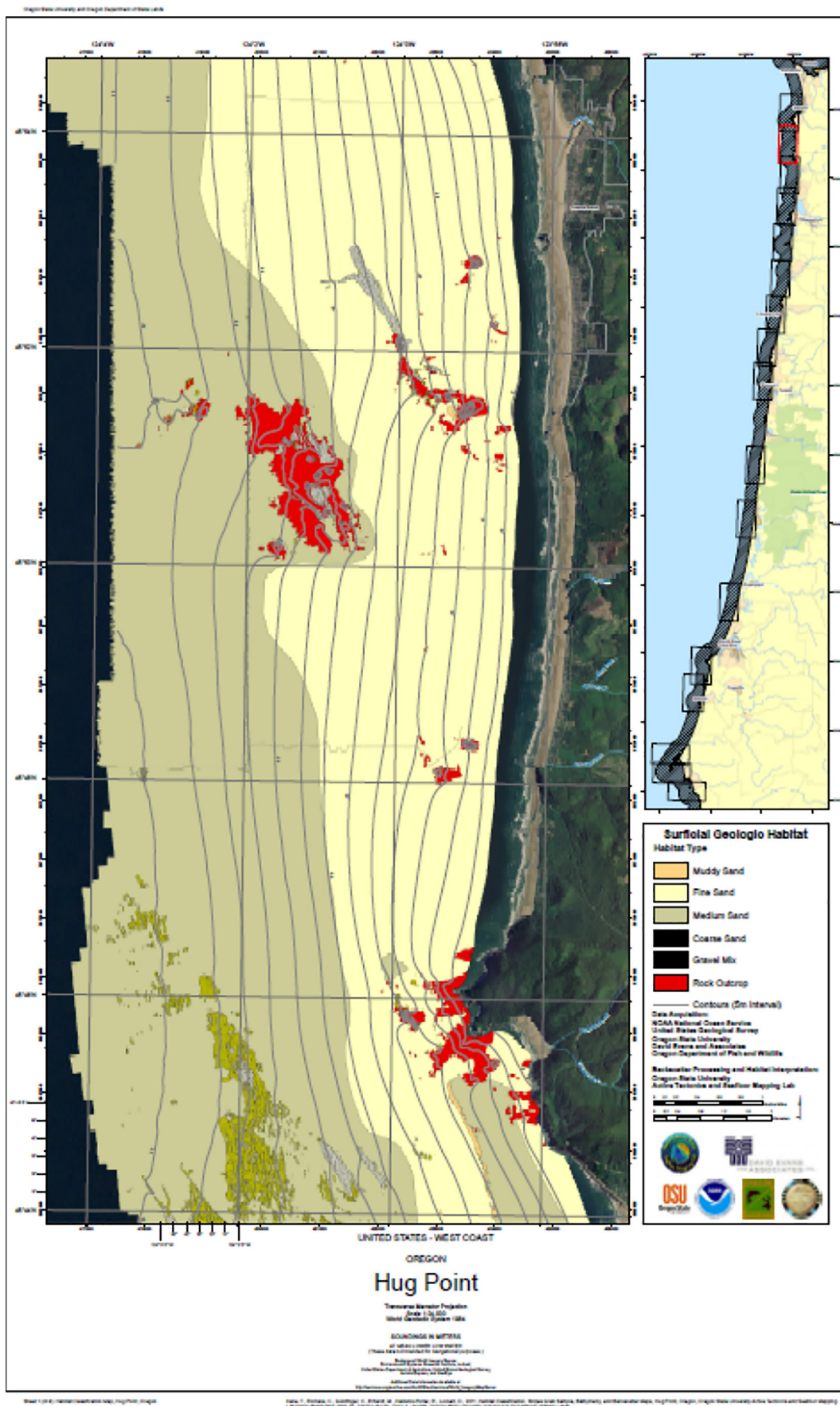


Figure B.9. Surficial geologic habitat near Newport, Oregon (OSU 2011).

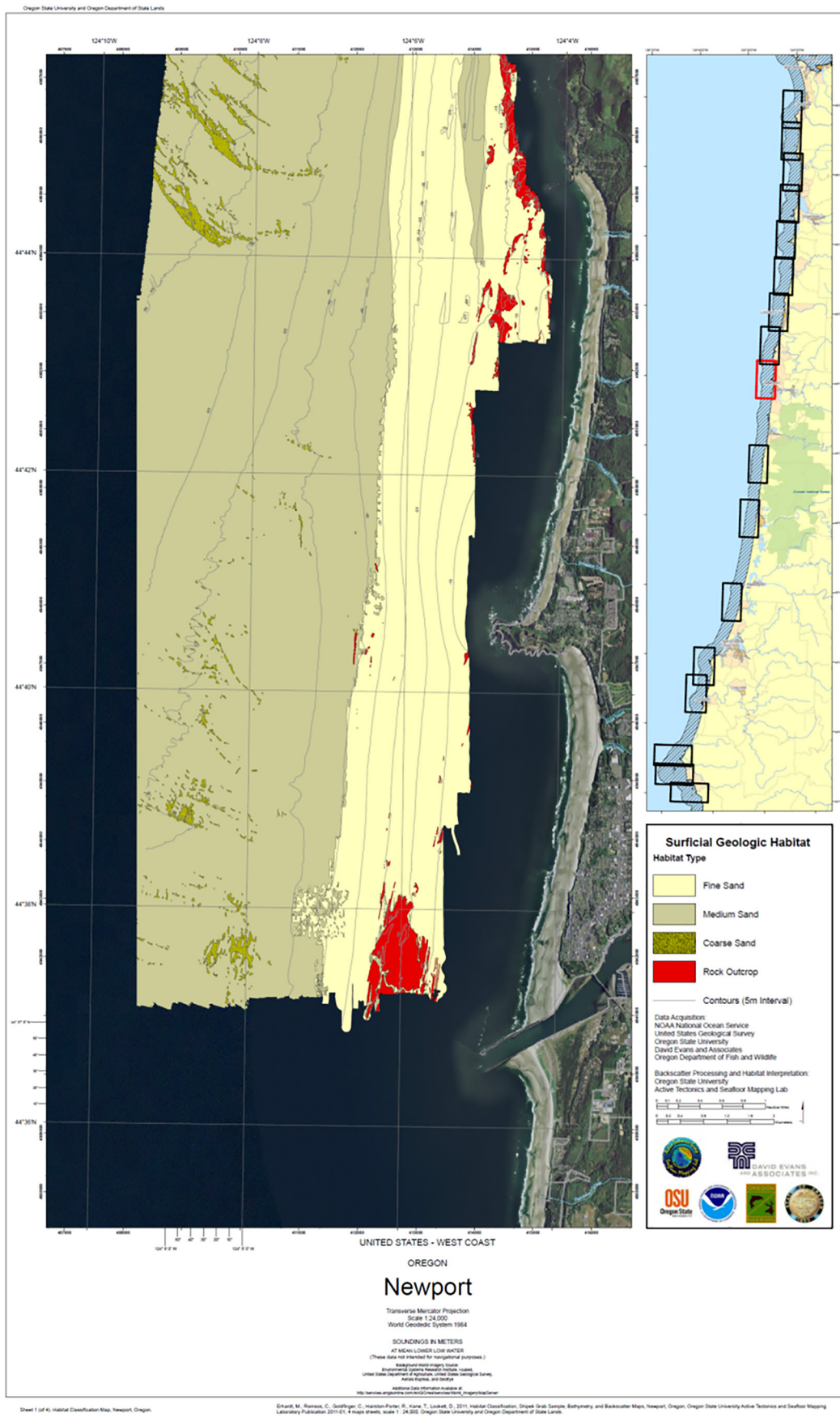


Figure B.10. Surficial geologic habitat near Cape Perpetua, Oregon (OSU 2011).

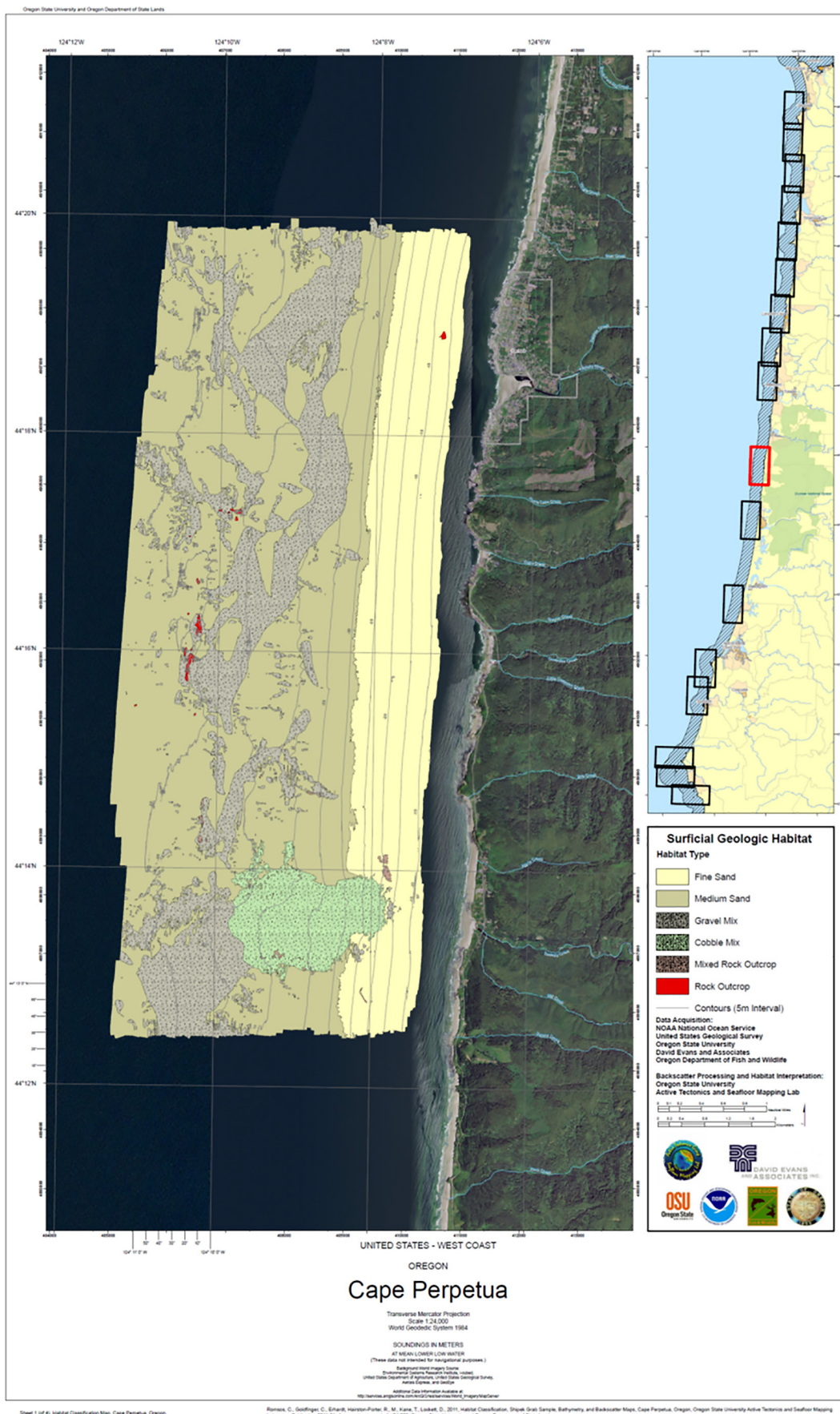


Figure B.11. Surficial geologic habitat near Florence, Oregon (OSU 2011).

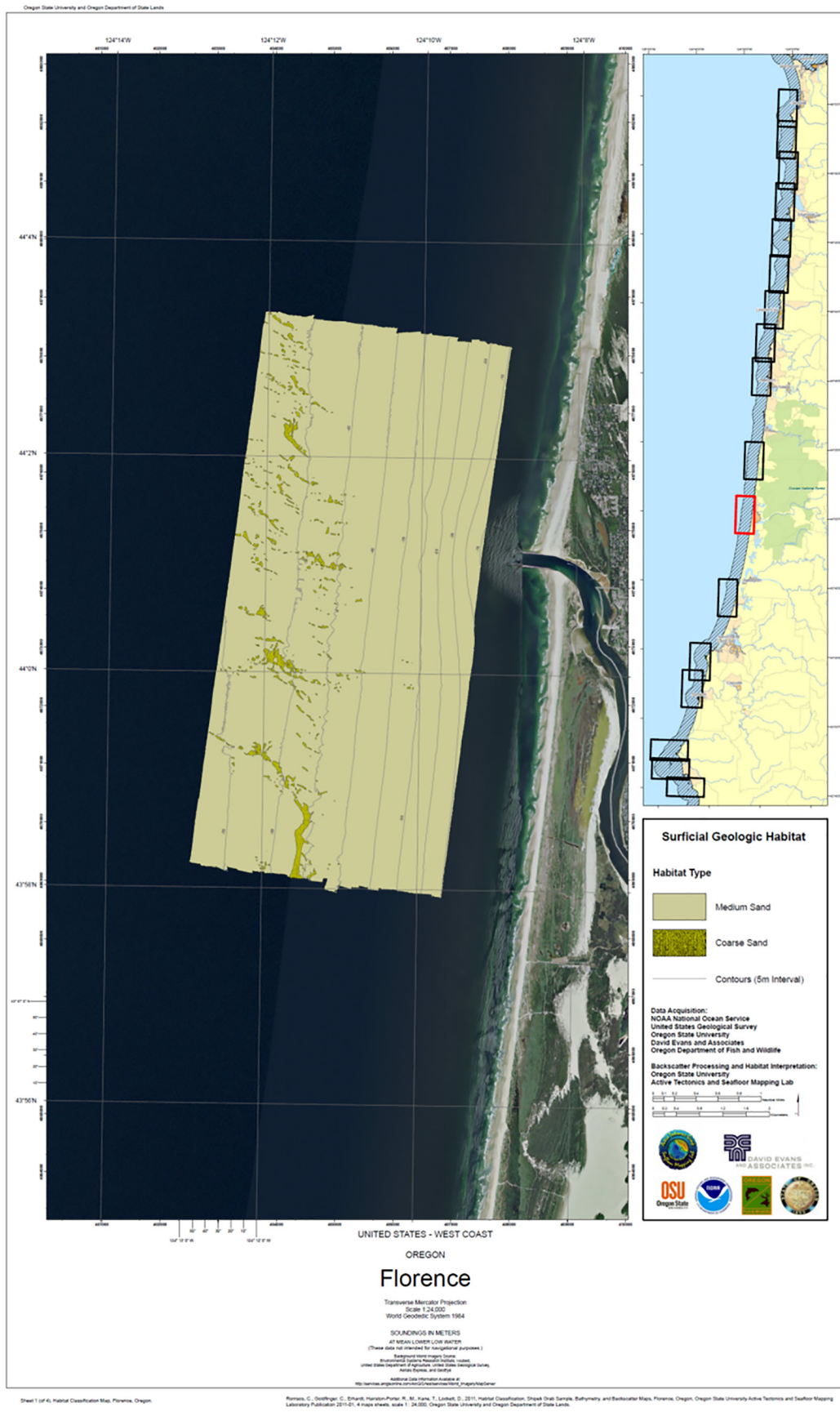


Figure B.12. Surficial geologic habitat near Lakeside, Oregon (OSU 2011).

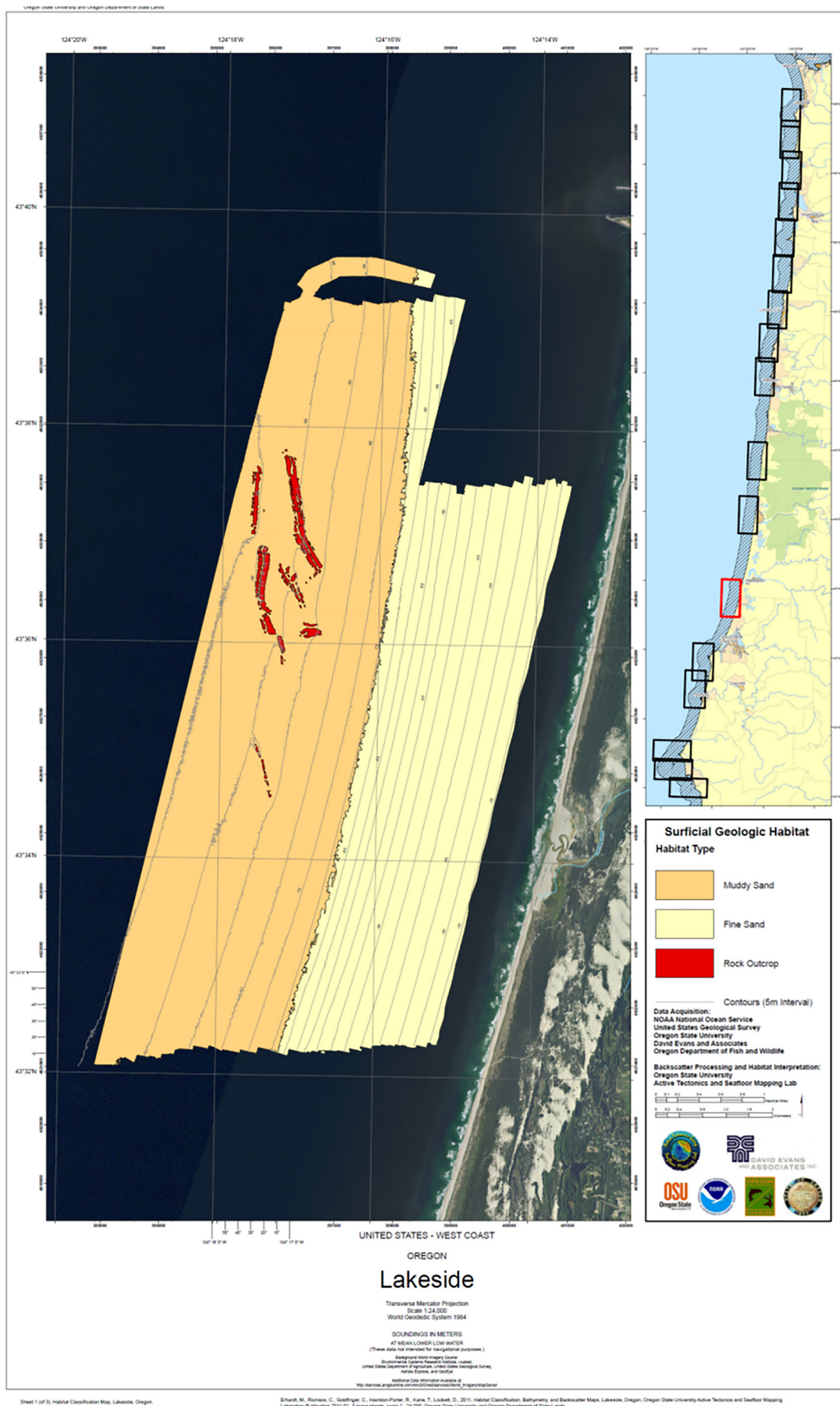


Figure B.13. Surficial geologic habitat near Cape Arago, Oregon (OSU 2011).

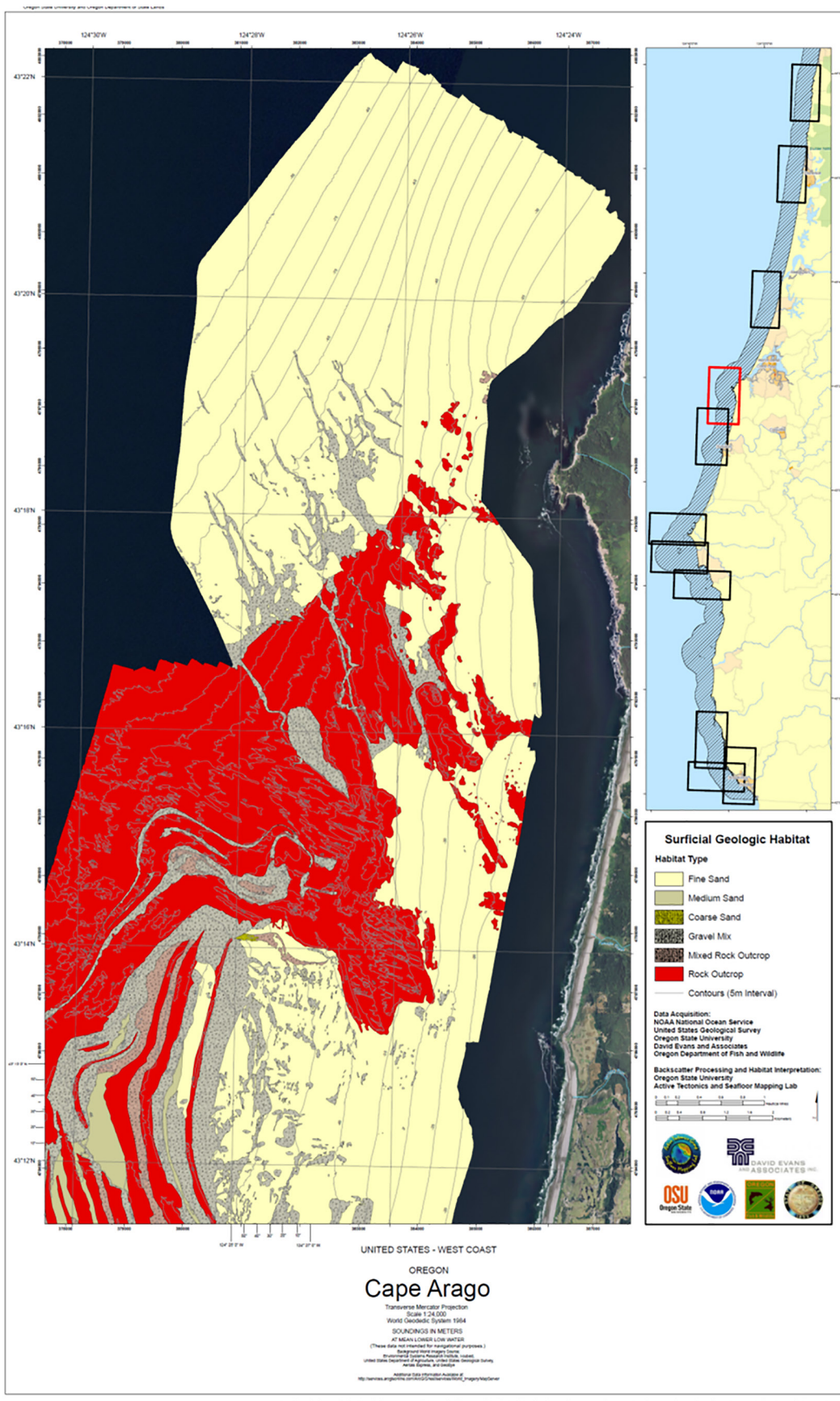


Figure B.15. Surficial geologic habitat near Blacklock Point, Oregon (OSU 2011).

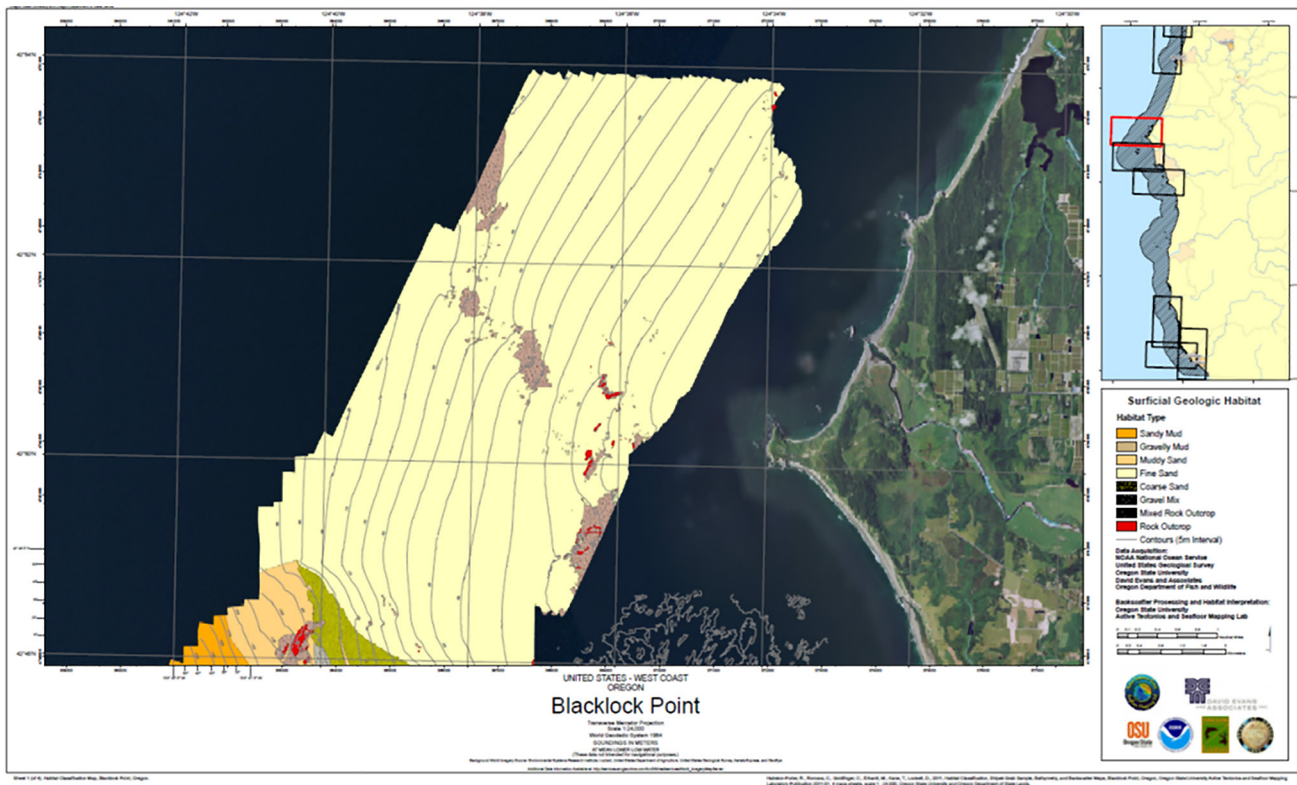


Figure B.16. Surficial geologic habitat near Cape Blanco, Oregon (OSU 2011).

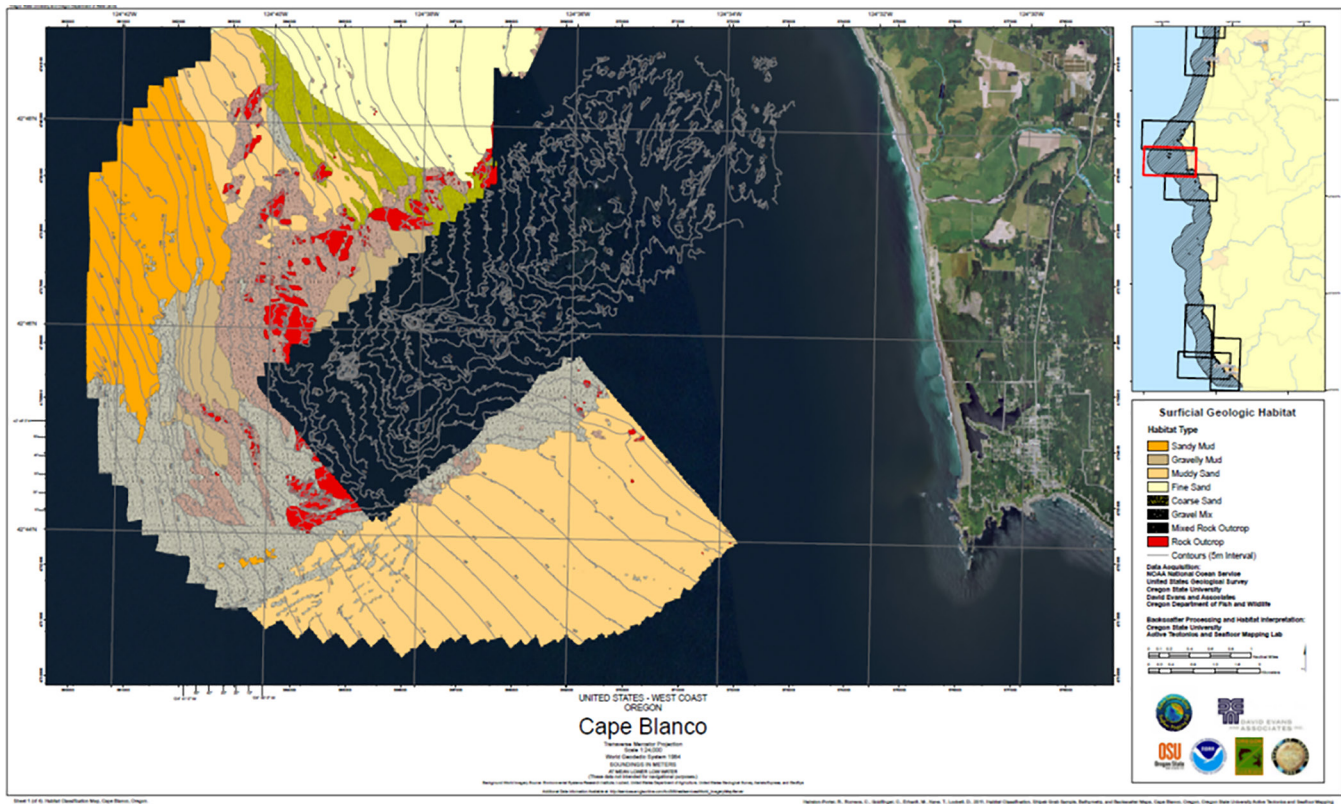


Figure B.17. Habitat types at Orford Reef and McKenzie Reef (ODFW 2006, p. 64).

Bottom habitat types at Orford and McKenzie's Reefs as interpreted from sidescan sonar imagery. (ODFW survey data).

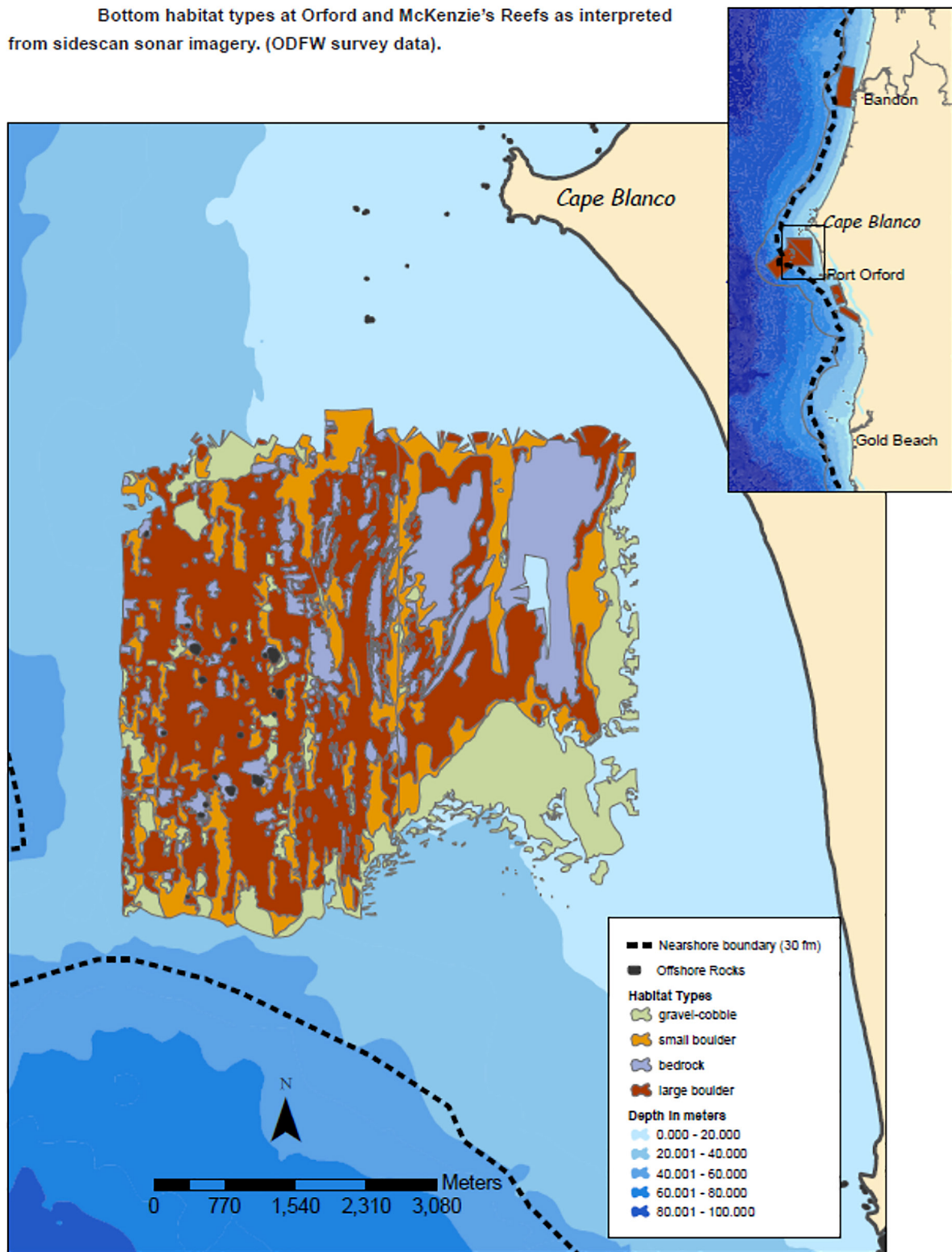
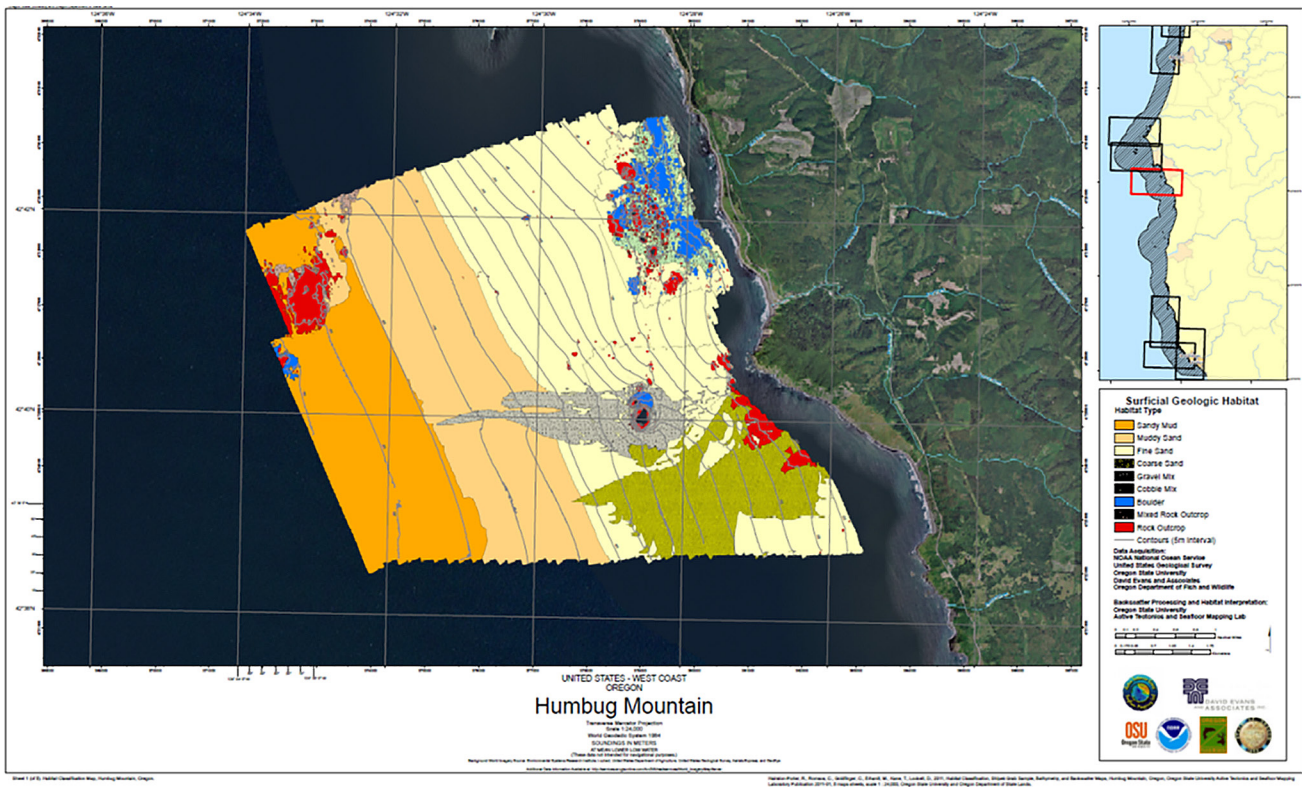


Figure B.18. Surficial geologic habitat near Humbug Mountain, Oregon (OSU 2011).



LITERATURE CITED

ODFW (Oregon Department of Fish and Wildlife). 2006. *The Oregon nearshore strategy*. Newport, OR: ODFW.

OSU (Oregon State University). 2011. [Surficial geologic habitat maps]. Corvallis, OR: OSU, College of Earth, Ocean, and Atmospheric Sciences.